

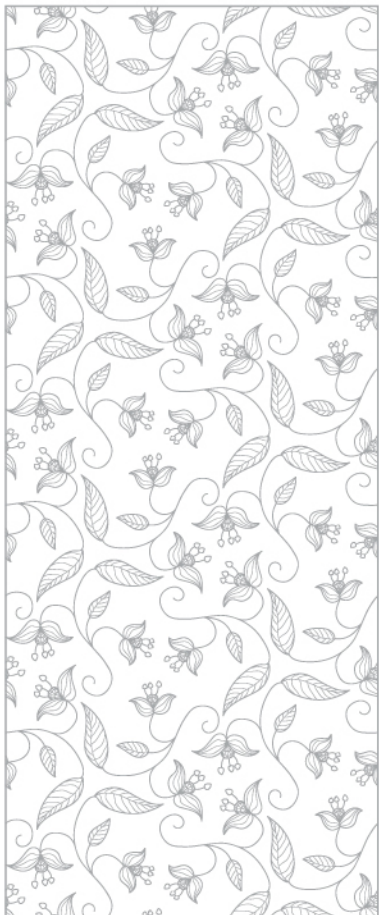


BMR
Tulips

4 BHK LUXURY
APARTMENTS



Kakateeya Hills,
Jubilee Hills

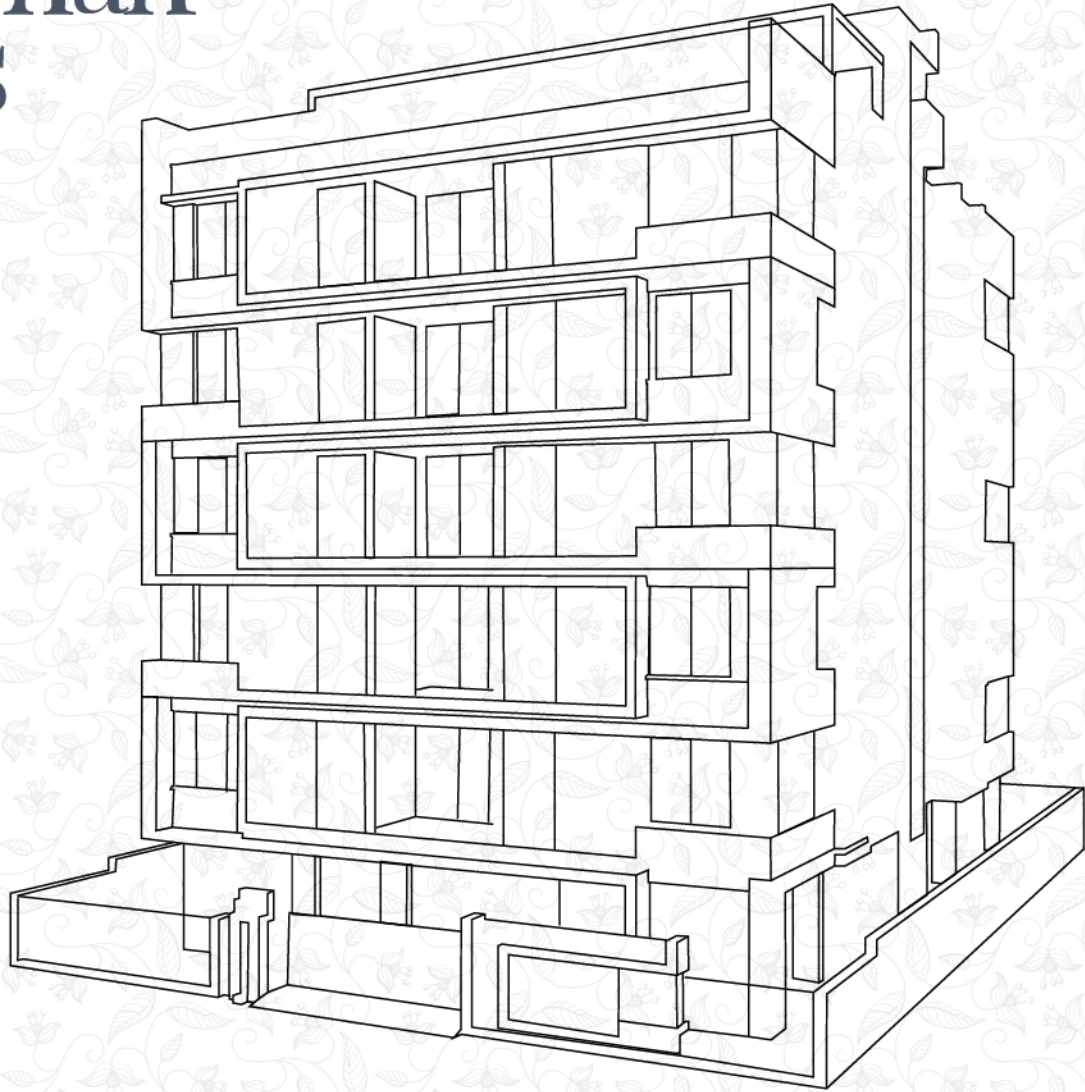


Building A Legacy Of Luxury

At BMR, we craft exceptional spaces that enhance everyday living. Our properties seamlessly blend architectural brilliance, modern aesthetics and cutting-edge technology to create homes of the future. With an unwavering commitment to quality, we design and build outstanding residences that redefine luxury.



Building More Than Homes



Our Legacy & Expertise

27+

YEARS OF EXPERIENCE

20+

PROJECTS COMPLETED

08

LAKHS + SQ.FT. DELIVERED

01

LAKH + SQ.FT. in CONSTRUCTION

Experience True Luxury at BMR *Tulips*

Luxury isn't just about grandeur; it's about a lifestyle that reflects your aspirations and individuality. BMR Tulips is designed to offer an unparalleled living experience where timeless elegance meets modern functionality. Every space is thoughtfully crafted to enhance comfort, style and exclusivity, ensuring a home that truly stands apart.

Located in a prime neighbourhood, BMR Tulips combines contemporary architecture with world-class amenities to create a sophisticated living environment. From expansive interiors adorned with premium finishes to lush green landscapes that offer tranquility, this is a residence where you can thrive, unwind and create lifelong memories.

At BMR Tulips, we uphold the highest standards in quality, design and engineering. Our commitment to timely delivery, impeccable craftsmanship and attention to detail ensures that your dream home is not just a place to live but a legacy to cherish.



Experience Luxury living

With 4 BHK Homes



BMR

BMR

Expansive Layouts & Exceptional Living

Experience a home that redefines luxury, offering an exclusive lifestyle in a class of its own.

Vaastu-Compliant Homes for Harmonious Living

Experience a seamless blend of traditional Vaastu principles and modern design, creating a home filled with harmony, prosperity and well-being for your family.

Discover the Elegance of BMR Tulips

Step into a world of refined living, where every detail is designed to enhance your lifestyle.

2950 Sft. of Spacious & Thoughtful Living

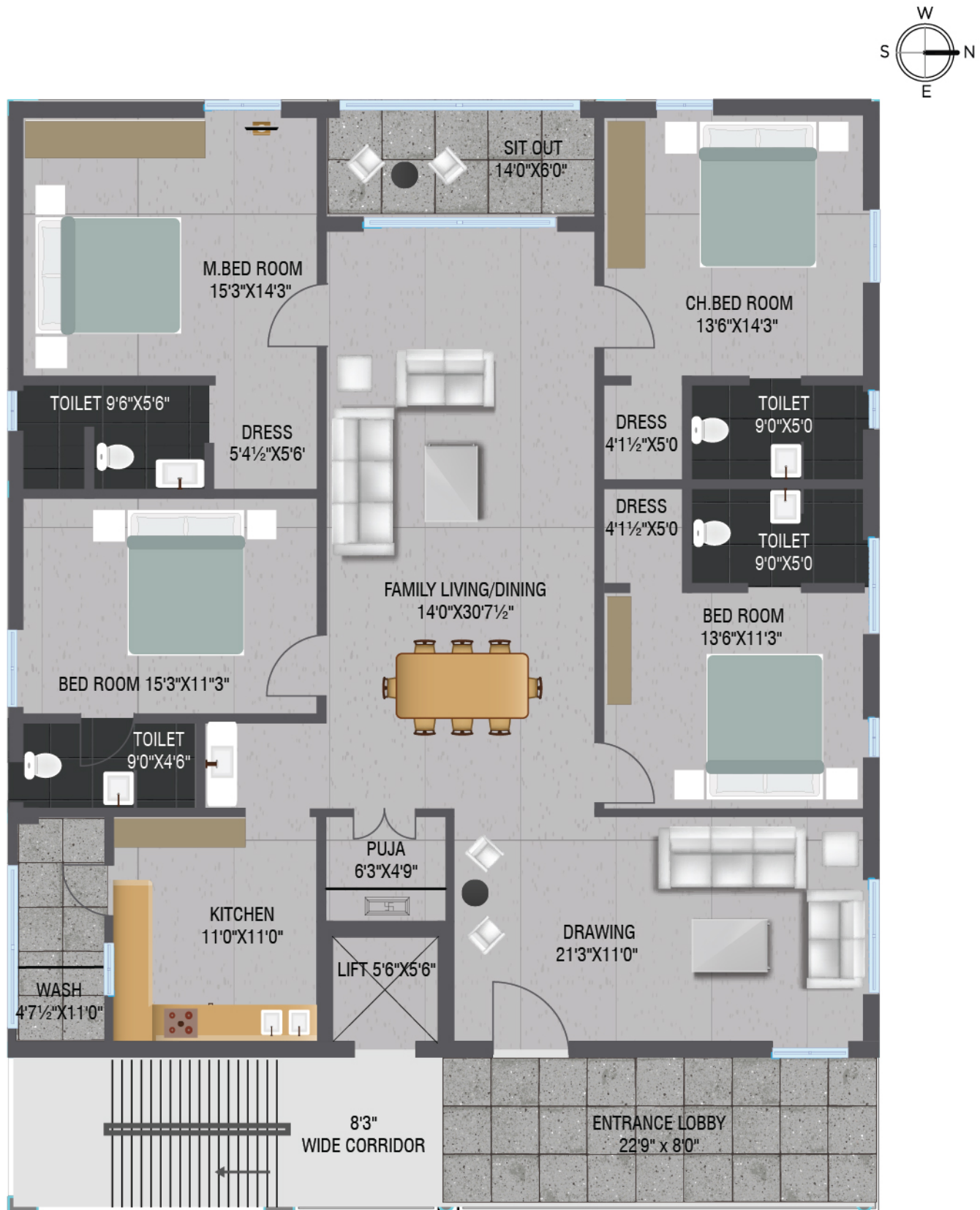
Spacious homes designed to maximize space, offering a grand and seamless living experience.

Meticulously Designed 4 BHK Residences

Thoughtfully crafted to offer the perfect balance of luxury, comfort, and functionality.



Floor Plan



Specifications



FOUNDATION & STRUCTURE

Robust RCC framework as per Indian Standard Code. High-quality ribbed steel for columns, footings and slab



SUPER STRUCTURE

High-quality, lightweight red bricks with cement mortar. Outer walls: 8" to 11" thick | Inner walls: 4" to 6" thick



FINISHING & INTERIORS

Two coats of smooth Birla (or similar) putty over cement plastering finished with two coats of premium plastic emulsion paint for all walls



CEILING

False ceiling with Saint Gobain sheets finished with two coats of Birla (or similar) putty and plastic emulsion paint



EXTERNAL ELEVATION

Top-quality elevation with a premium finish



WINDOWS

UPVC windows from Fenesta/Aparna or high-quality aluminum options



DOORS

Frames: Handcrafted wall width frames
Doors: Veneer-finished flush doors with premium hardware (Godrej or equivalent)



FLOORING

Living & Bedrooms: 800mm x 800mm vitrified tiles (Kajaria/RAK)
Bathrooms: 1200mm x 600mm anti-skid tiles (Kajaria/RAK) for flooring and walls
Utility Area: Anti-skid tiles with wall tiles up to sill height



BATHROOMS

Wall-mounted EWC (Kohler/Grohe)
Hot & cold mixer with shower (Kohler/Grohe)
Washbasin with hot & cold mixer (Kohler/Grohe)



KITCHEN & UTILITY

Bare shell kitchen with provisions for: Sink, RO Water system, mixer, grinder, refrigerator, oven, washing machine and dishwasher in the utility area



ELECTRICAL

3-phase power supply
PVC insulated, fire-resistant, multi-strand copper wiring (reputed brands), modular switches (Havells/Legrand), power outlets and copper piping for air conditioners. Geyser provision in all the bathrooms. Dedicated points for RO unit, oven, refrigerator, mixer, dishwasher and washing machine



SECURITY

CCTV surveillance and Video door phone system



PARKING

LED-lit common areas
Provision for electric car charging units



COMMUNICATION

Intercom facility in the living room
High-speed internet via cable in the living room
TV unit provision in the living room and master bedroom



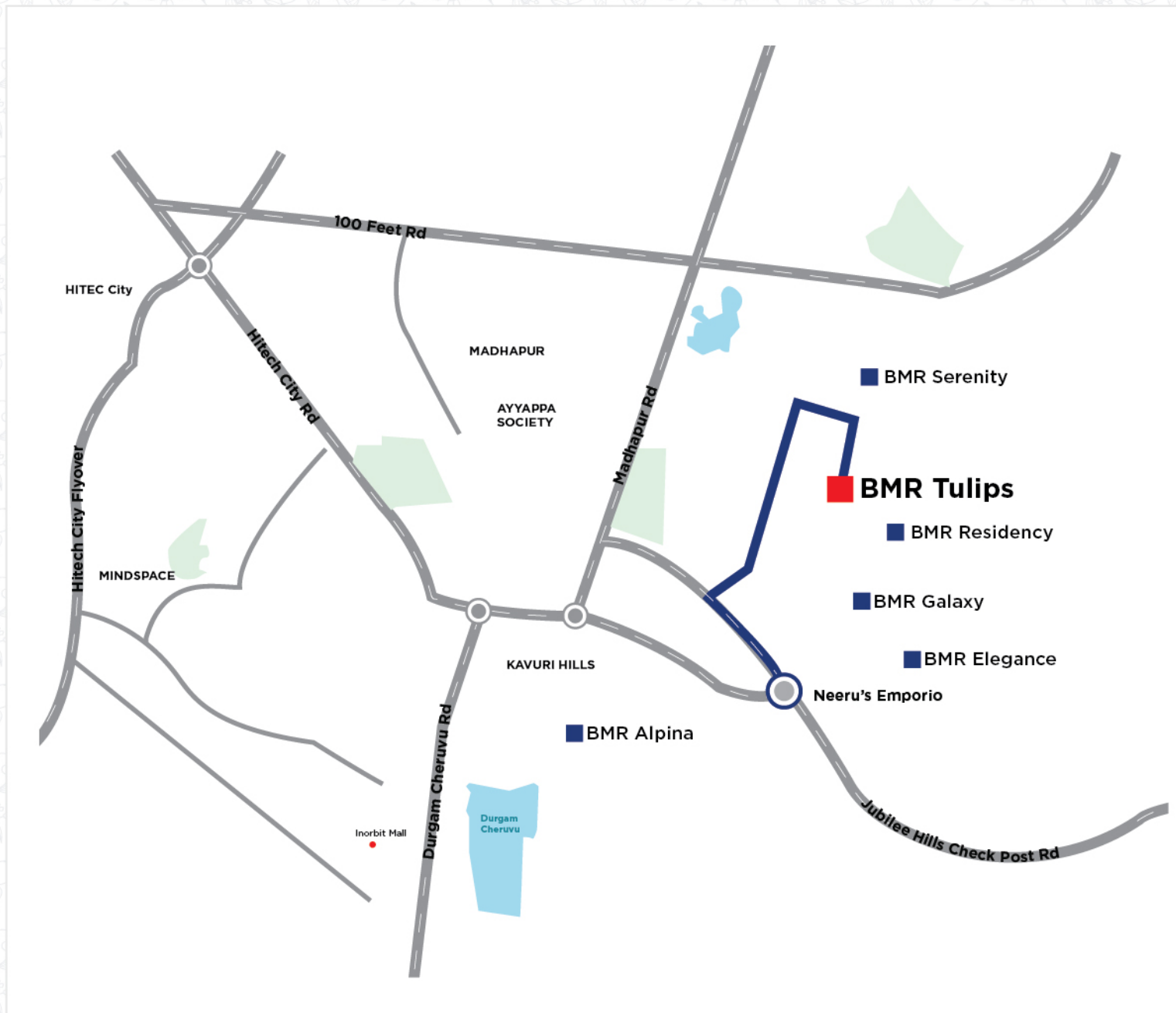
GENERATOR

DG backup for all flats (Kirloskar Green or equivalent silent generator)



LIFT

6-passenger lift (Schindler/Kohler)



LOCATION HIGHLIGHTS

BUSINESS & TECH PARKS

- Cyber Towers
- Mindspace
- Cyient
- Tech Mahindra
- Oracle
- Google
- Ascendas Park
- Mouritech IT Park
- Q-Hub Co-Working Space
- Satarpuria Knowledge City

EDUCATIONAL INSTITUTIONS

- Meridian School
- Siate Felici
- Oakridge International School
- Delhi Public School
- St. Mary's Junior College
- Velocity College
- New York Academy
- Bhavans

SHOPPING DESTINATIONS

- Neeru's Emporio
- Croma
- Nexus Mall
- Sarath City Capital Mall
- E Galleria
- South India Shopping Mall

Scan for location



We Create Real Homes!

At BMR Projects Limited, we are driven by a team of visionary experts in the construction industry. Our approach is fueled by creativity and imagination, crafting living spaces that not only harmonize with the environment but also encourage healthier lifestyles. We prioritize comfort, tranquility and architectural excellence, ensuring every home is designed with precision and a thoughtful use of materials to maximize space. Setting the standard for future construction, BMR Projects Limited is committed to building homes that are not just beautiful but also practical. We believe in building beautifully, living beautifully and thinking with purpose.



BMR GALAXY



📍 Kakateeya Hills, Jubilee Hills

BMR SERENITY



📍 Kakateeya Hills, Jubilee Hills

BMR HILLCREST



📍 Humayun Nagar

BMR PEARL



📍 Shanti Nagar

BMR PLATINA



📍 Shanti Nagar

BMR RESIDENCY



📍 Kakateeya Hills, Jubilee Hills

BMR ELEGANCE



📍 Kakateeya Hills, Jubilee Hills

BMR ALPINA



📍 Kavuri Hills, Jubilee Hills



LORDS INSTITUTE OF ENGINEERING & TECHNOLOGY

📍 Himayat Sagar



FARAH INSTITUTE OF TECHNOLOGY

📍 Chevella



Corporate Office

**3rd Floor, KFC-MC Donalds Building,
Prestige Towers, MehdiPatnam,
Hyderabad - 500028**

**6303180165/6 9963180113
www.bmrprojects.com**

NOTE : This folder is purely conceptual and not a legal offer. Area is tentative and actual areas arrived at completion of the apartment may differ.
The promoters reserve the right to make changes in elevation, plans & specifications as deemed fit.