

# RISE UP TO LUXURIOUS LIVING

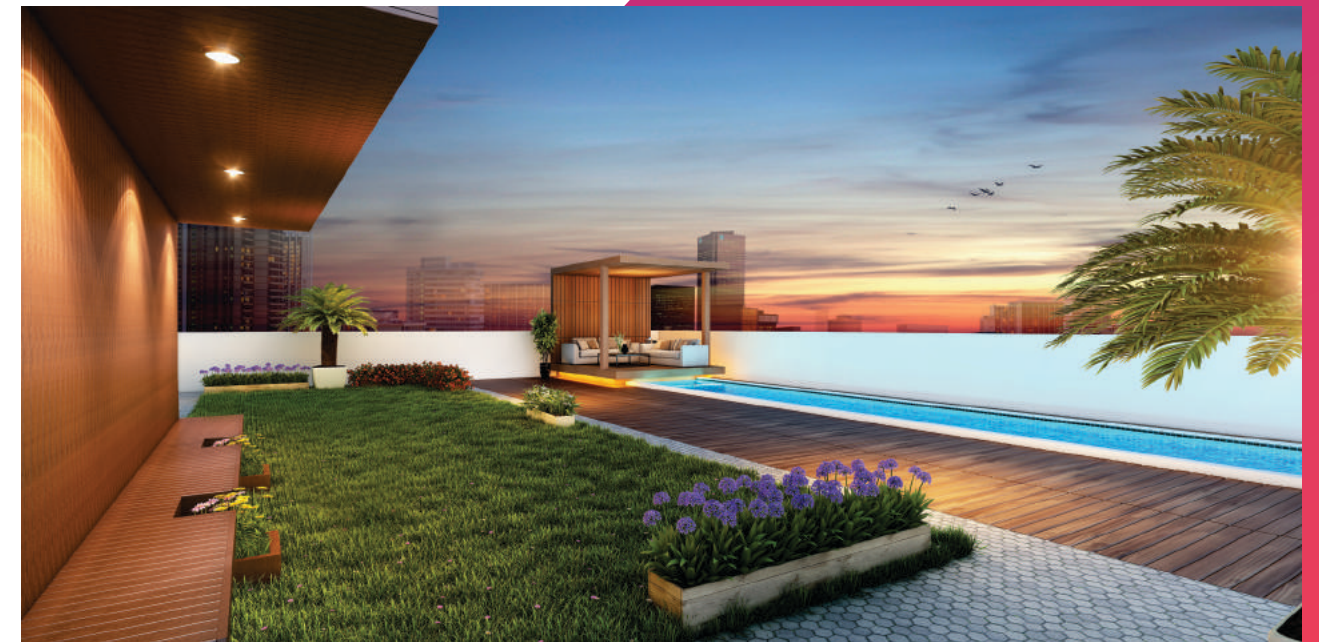
EQUIPPED WITH ADVANCED TECH FEATURES







With a vision to deliver a greater lifestyle, BMR projects is promoted by builders with an experience in building quality life spaces since 1991. Considering the present sphere of property development, BMR Group stands as the leader by their innovation led future focused properties. In the enormous journey of 27 years, the promoters have led to foundation of several education campuses, residential apartments, commercial spaces, hotels & hospitals covering over 10,00,000 sft. area. The Group is promoted by Chartered Accountants, Alumnus of BITS Pilani & ISB Hyderabad with specialization in Civil Engineering and an Architect with M.Arch in Interior Designing.



Artistic representation of Terrace

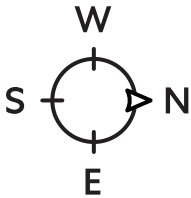
## BMR RESIDENCY

Living is all about directing life & style to form a lifestyle of your own. BMR Projects brings its flagship project, BMR RESIDENCY at Kakateeya Hills, near Kavuri Hills & Jubilee Hills of Hyderabad. Its offering is designed for an elaborated lifestyle that brings together spectacular feel and tech-enabled amenities. The flats, with premium touch and finish, inspire a sense of greater living into its occupants. Every place and space is designed to please the eyes of a connoisseur of luxury and elegance.



FLOOR PLAN

Cellar + Stilt + 5 Floors  
2 Flats Per Floor - Total 10 Flats  
20 Cars Parking Facility In Stilt & Cellar



ROAD

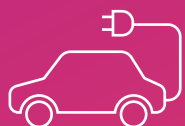
## AMENITIES



Minimum distance  
between neighbour's flat – 22 feet



100% power back up  
with a silent DG set



Electric Car charging  
points in Parking bays.



CCTV camera surveillance &  
Video Door phones for  
advanced security.



Landscaped terrace appropriate  
for small get-togethers.

## EVERYTHING IN PROXIMITY

Life comes in full circle at BMR Residency, as you got everything in place and it just takes minutes to reach everywhere.

### LESS THAN 5 mins

- Commercial hub of Jubilee Hills Road. No. 36
- IT Hub of Hitech City, Madhapur, Kavuri Hills
- Madhapur Police Station
- DMart, Ratnadeep, Karachi Bakery

### LESS THAN 15 mins

- Apollo Hospital
- Image Hospital
- Bharatiya Vidya Bhawan School
- Jubilee Hills Public School
- KBR Park
- Inorbit Mall
- Jubilee Hills Club

### LESS THAN 30 mins

- Indian School of Business
- Emaar Golf Club
- Hyderabad Golf Club
- GVK One
- Oakridge International School
- Delhi Public School
- Meridian School
- Chirec School

### LESS THAN 45 mins

- Rajiv Gandhi International Airport
- Hyderabad Railway Station
- Mahatma Gandhi Bus Station



## SPECIFICATIONS

FOUNDATION & STRUCTURE:	RCC Framework with Ultratech (or similar) cement & high quality ribbed steel for columns, footings & slab.
SUPERSTRUCTURE:	High Quality light weight bricks with cement mortar. Outer walls 6" to 9" thickness and Inner walls 4.5".
FINISHING & INTERIORS:	Plastic emulsion paint over two coats of smooth Birla putty & two coats of cement plastering
EXTERNAL ELEVATION:	Two coats of weather shield paint with top quality elevation.
DOORS:	
Frames:	Teak wood frames for all doors.
Doors:	Main door - aesthetically designed flush door with reputed hardware.
Inside doors:	Veneer finished flush doors with good quality reputed hardware.
WINDOWS:	UPVC windows of Fenesta (or similar make).
FLOORING:	3'x3' Glazed vitrified tiles* 2'x1' Anti-skid tiles for bathrooms and utility area* 2'x1' Ceramic glazed/matt wall tiles upto 7' height for bathroom* 1'x1.5' Ceramic wall tiles upto 3' height for utility area* 2'x1' Ceramic wall cladding upto 2' above the platform*
KITCHEN:	2'6" wide L-shaped granite counter top with stainless steel sink and provision for Exhaust and water purifier.
TOILETS:	Wall mounted EWC's and Hand wash of Jaquar/Grohe or similar brand* Good quality bathroom fittings and hot & cold mixer with shower of Jaquar/Grohe or similar brand*
ELECTRICAL:	3-phase supply for each unit. PVC insulated fire resistant copper conductor multi-strand wiring of Finolex or equivalent. Modular switches of Havells/Legrand make or equivalent. Power outlets for air conditioners in all rooms, geysers in all bathrooms, refrigerator, microwave, mixers, dish washers in Kitchen & washing machine in Utility area.
COMMUNICATION:	Provision for Hi-speed Internet via cable & TV unit in Living Room & Master Bedroom.
PARKING:	Parking area with sensor lighting, Electric Charging points for Electric Vehicles.
SECURITY:	Video door phone system for enhanced security CCTV surveillance & Solar fencing. Intercom system with Watchman & neighbouring flats.
GENERATOR:	DG backup with Kirloskar Green (or similar) silent generator.
LIFTS	8-passenger lift of reputed brand (Schindler or Johnson)
TECH-LUXURY**	Home Automation with Digital Door Lock, Lighting control, Fan Control, Geyser control, Sensors & Smartphone App.

\* Can be modified as per the buyer's request if informed prior to completion of brickwork of the respective flat. Costs will be adjusted as per the requirement.

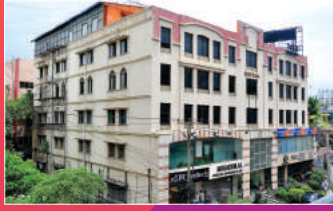
\*\* Additional cost as per the requirement will be covered under Manufacturer's warranty.



## FEW OF THE COMPLETED PROJECTS OF BMR GROUP



**ELITE TOWERS**  
Raj Bhavan Road  
Commercial Tower - 35,000 Sft.



**ELITE PLAZA**  
Somajiguda Circle  
Commercial Tower - 50,000 Sft.



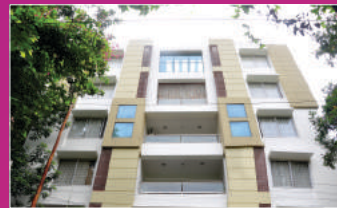
**ELITE ARCADE**  
Punjagutta, Road No. 1,  
Banjara Hills  
Commercial Tower - 35,000 Sft.



**ELITE COURT**  
Dharam Karan Road,  
Ameerpet  
Residential Tower - 30,000 Sft.



**ELITE HEIGHTS**  
Asif Avenue, Raj Bhavan Road  
Residential Tower - 25,000 Sft.



**BMR TOWERS**  
Shanti Nagar, Masabtank  
Residential Tower - 25,000 Sft.



**PRESTIGE TOWERS**  
Pillar No. 4, Mehdiapatnam  
Commercial Tower - 50,000 Sft.



**FARAH INSTITUTE OF TECHNOLOGY**  
Chevella, R.R. District  
Engg. College - 3,00,000 Sft.



**LORDS INSTITUTE OF ENGINEERING & TECHNOLOGY**  
Himayathsagar, Appa Junction  
Engg. College - 2,50,000 Sft.



### BMR RESIDENCY

Plot No. 143 & 144, Road No.3, Kakateeya Hills, Kavuri Hills  
Phase 2, Jubilee Hills, Hyderabad, Telangana - 500 081

### CORPORATE OFFICE

10-3-76, 3<sup>rd</sup> Floor, KFC McDonalds Building, Prestige Towers,  
Pillar No. 4, Mehdiapatnam, Hyderabad - 500 028

🌐 [www.bmrprojects.com](http://www.bmrprojects.com) ✉ [bmrprojectshyd@gmail.com](mailto:bmrprojectshyd@gmail.com)  
☎ +91 6303 180 165 | 6301 439 801

Architect



Structural Engineer

**ZAKI & ASSOCIATES**