

# BMR PLATINA

YOUR LUXURIOUS HOME NESTLED  
IN A **SPACE BEYOND LUXURY.**

EXPERIENCE THE COMFORT AND  
LUXURIOUS 3 BHK APARTMENTS IN  
SHANTI NAGAR, HYDERABAD



# In sync with Grandeur

**BMR PLATINA** IS A LUXURY RESIDENTIAL PROJECT BEING DEVELOPED IN SHANTI NAGAR BY **BMR PROJECTS LIMITED**. KEEPING IN MIND THE NEEDS OF OUR DISCERNING HOME BUYERS, THIS PRESTIGIOUS PROJECT OFFERS A VERSATILE COMBINATION OF A SMART HOME WITH TRADITIONAL AESTHETICS. EXPANSIVE IN LIVING SPACE AND SUBDUED LUXURY TO ACCENTUATE YOUR LIFESTYLE, THIS IS YOUR 21ST CENTURY PERSONALIZED HOME.



## PROJECT PROPERTIES AT A GLANCE

### AN INSIGHT INTO A WELL CONNECTED NEIGHBORHOOD

Shantinagar is strategically located in the heart of the city and has been awarded as one of the best colonies in Hyderabad. It is in close proximity to Hospitals, Schools, Public Utilities and Food outlets.



### ARCHITECTURALLY IT IS OUR STATE-OF-THE-ART HABITAT

It is designed with the latest comforts and aesthetics for a family.



### HIGH END 3 BHK APARTMENTS

*The perfect sequel to a home that matches your lifestyle*

Grandeur reflects the sunlit living room – Consists of a classic hall that can be customized as per home buyer's choice.



### WELL APPOINTED SAFETY FEATURES FOR EACH APARTMENT

CCTV camera, Video Phones, Intercom facilities will enable communications





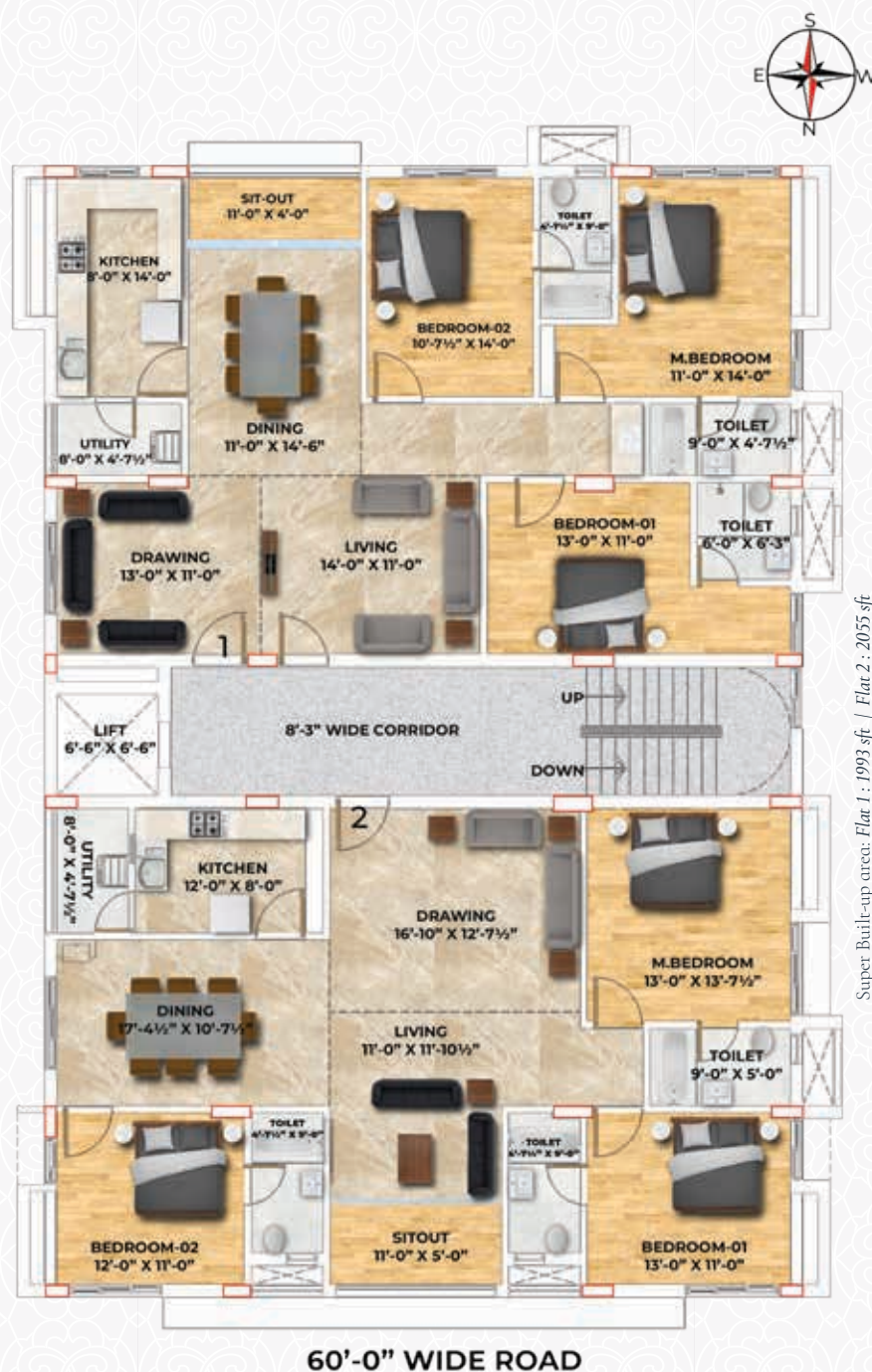
# In sync with • Perfect Planning

Discover the taste of the future architecture style that BMR Projects Limited lends to their residential complex offering for Hyderabad residents with bespoke taste.

We celebrate the timeless elements of an abode which functions with state-of-the-art design, décor and latest security systems.

With your personalized well designed interior the result is a magnificent space.

*Book a visit to the site to check the good quality construction.*



Super Built-up area: Flat 1 : 1993 sft / Flat 2 : 2055 sft



# Standard Specifications

FOUNDATION & STRUCTURE	RCC Framework as per Indian Standards Code using High Quality branded ribbed Steel for Columns and Footings using site mix of Ultratech cement and River Sand, Slab with Ultratech RMC
SUPERSTRUCTURE	High Quality light weight red bricks with Cement mortar of ACC Cement - Outer Walls 6" to 14" thick and inner walls 4" to 6" thick
FINISHING & INTERIORS	Two coats of smooth Birla (or similar) putty over cement plastering, finished with two coats of plastic emulsion paint
EXTERNAL ELEVATION	Two coats of weather shield paint with top quality elevation
WINDOWS	UPVC windows of Reputed Brand
DOORS	Frames: Teak wood frames for all doors Doors: Veneer finished flush doors with good quality hardware of Godrej make
FLOORING	3' x 3' vitrified tiles of Kajaria/Somany make Bathrooms with 4'x2' Anti-skid flooring and wall tiles of Kajaria / Somany make Utility with Anti-skid Tiles and wall tiles up to 3'0 height
BATHROOM	Wall mounted EWC's of Koehler/Grohe make Hot & Cold mixer with shower of Koehler/Grohe make Wash basin with hot & cold mixer of Koehler/Grohe make
KITCHEN & UTILITY	Bare shell with provision for sink, RO water, mixer, grinder, refrigerator, Oven; Washing Machine and Dishwasher in utility
ELECTRICAL	3-Phase supply to each unit PVC insulated fire resistant copper conductor multi strand wiring of Havells/Legrand make Modular switches of Havells/Legrand make Power outlets along with copper piping for air conditioners Provision for Geysers in all bathrooms
PARKING	LED lit common areas and provision for Electric Car Charging unit
COMMUNICATION	Intercom facility to all flats in the Living Room Hi-speed Internet via cable to Living Room TV unit in living and master bedroom
GENERATOR	DG backup for all flats with Kirloskar Green (or similar) silent generator
LIFT	8 – passenger lift of Schindler/Johnson/Kone make
TECH - LUXURY**	Home Automation with Digital door lock, Lighting Control, Fan Control, Geyser Control, Sensors & Smartphone App

\*\* To be charged additionally as per the requirements of the customer

# In sync with **Flexibility** and **Future Changes**

## GET THE ADVANTAGE

Our spaces are designed for property owners who prefer quality over quantity. Every apartment offers floor to ceiling flexibility for future changes. Your home is environmental friendly, futuristic and timeless.



### **BMR Towers**

Residential Tower @ Shanti Nagar  
25000 sft - 10 High End 3BHK Units



### **BMR Residency**

Residential Tower @ Kakateeya Hills  
25,500 sft - 10 Ultraluxurious 3 BHK Units

## ONGOING PROJECTS

**BMR HILL CREST @ Humayun Nagar (Near Neeru's Emporium) - 30,000 sft of Residential Towers**

**BMR ALPINA @ Kavuri Hills (Near Durgam Cheruvu) - 15,000 sft of Office Space**

**BMR ORION @ Uppal Bhagat (Near Nagole Metro Station) - 1,25,000 sft 10 floors Residential Hi Rise Towers**



# BMR Projects at a glance

The vision of BMR Projects development team always is focused on creating properties that combine contemporary living with authentic functionality. Choosing locations that offer the ultimate retreat to homebuyers is a priority. Cozy living for a family is the hallmark for each project.

We have perfected the fine art of living in Hyderabad where each family lives a comfortable life.

Thank you for taking interest in our new project BMR Platina. We hope you shall join other families that have invested their future in our offerings.



Artistic 3D view only meant for representational purpose

# Completed Projects



Elite Heights @ Raj Bhavan Road  
(Residential Tower - 25000 sft)



Elite Court @ Dharam Karan Road (Ameerpet)  
(Residential Tower - 30000 sft)



Elite Towers @ Raj Bhavan Road  
(Commercial Tower - 35000 sft)



Elite Plaza @ Somajiguda Circle  
(Commercial Tower - 50000 sft)



Elite Arcade @ Punjagutta,  
Road No.1, Banjara Hills  
(Commercial Tower - 35000 sft)



Prestige Towers @ MehdiPatnam, Pillar No. 4  
(Commercial Tower - 45000 sft)



Farah Institute of Technology @ Chevella RR Dist. (3,00,000 sft)



Lords Institute of Engineering & Technology @ Himayat Sagar, TSPA Junction (3,00,000 sft)

"This presentation is conceptual in nature and not by any means a legal offering. The promoters reserve the right to change, delete or add any specifications or plans mentioned herein."

## BMR PLATINA

**BMR**  
PROJECTS LIMITED

### BMR PLATINA

Plot No. 13, Road No.1, Shanti Nagar, Hyderabad - 500028

### CORPORATE OFFICE

10-3-76, 3rd Floor, KFC McDonalds Building, Prestige towers, Pillar No. 4, MehdiPatnam, Hyderabad - 500 028



[www.bmrprojects.com](http://www.bmrprojects.com)



[info@bmrprojects.com](mailto:info@bmrprojects.com)



+91 6303180165 | 6301439801

### ARCHITECT



**VISTAAS ARCHITECTURAL  
CONSULTANTS**  
Hyderabad, Mumbai, Pune, Vizag

### STRUCTURAL ENGINEERS



**ZAKI & ASSOCIATES**